



**CHURCHILL**  
COUNTRY & EQUESTRIAN

# Copped Hall Old Dairy, West Sussex

Copped Hall Farm, Okehurst Lane, Billingshurst, RH14 9HR

An exciting development opportunity. For conversion to a 3-bed single story dwelling with parking and lawned garden.

Application reference DC/19/1257

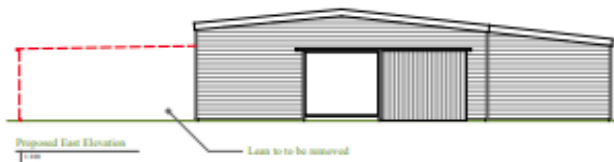
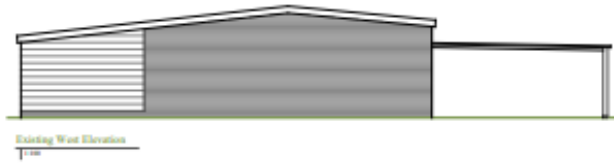
In addition to the conversion there are a number of old farm buildings providing plenty of scope for garaging or other uses. Please note there will be a covenant to prevent a second separate dwelling.

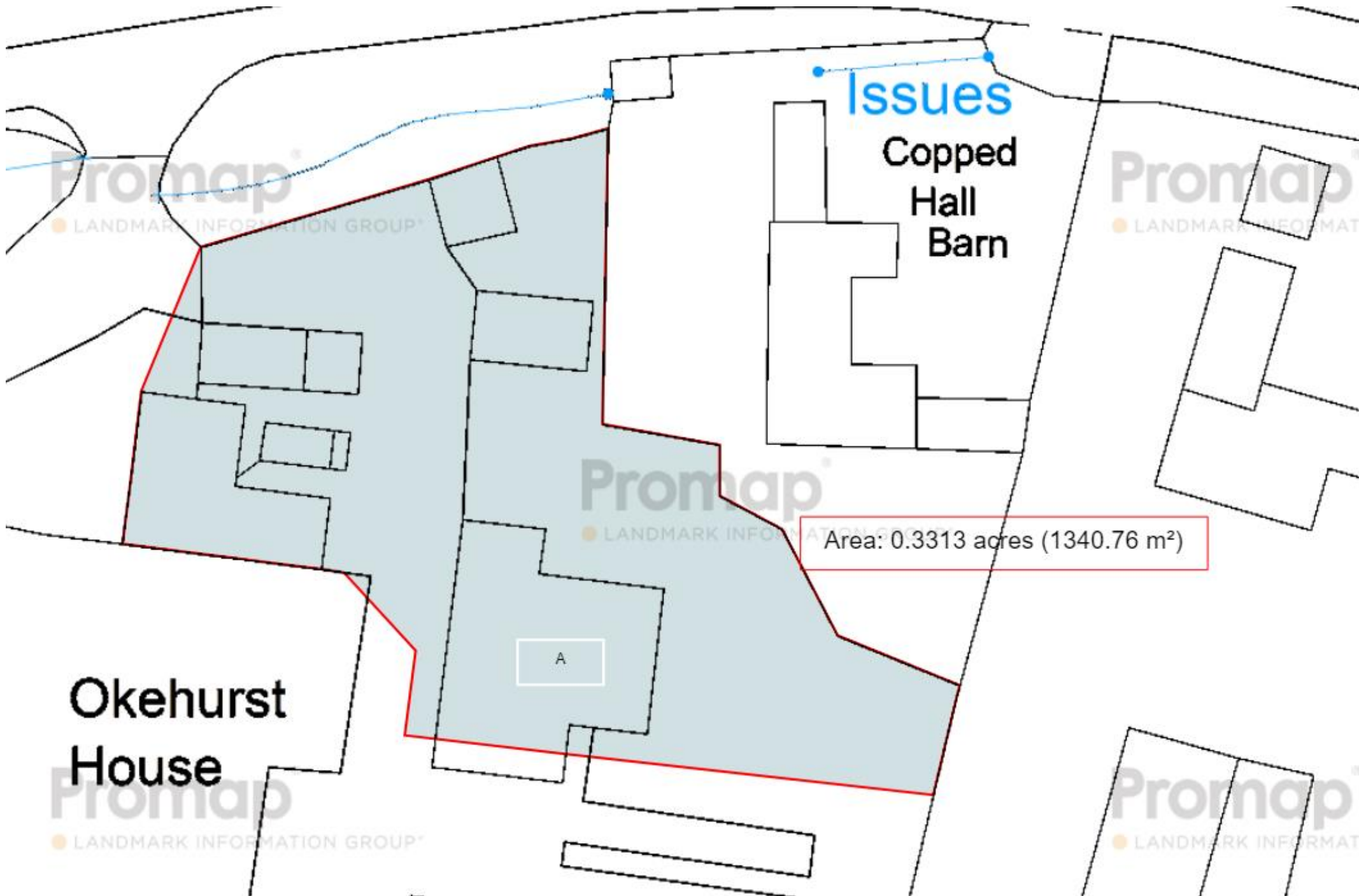
Water and electricity are connected.





# Planning elevations





Issues

Copped  
Hall  
Barn

Okehurst  
House

Area: 0.3313 acres (1340.76 m<sup>2</sup>)

A

Promap  
LANDMARK INFORMATION GROUP

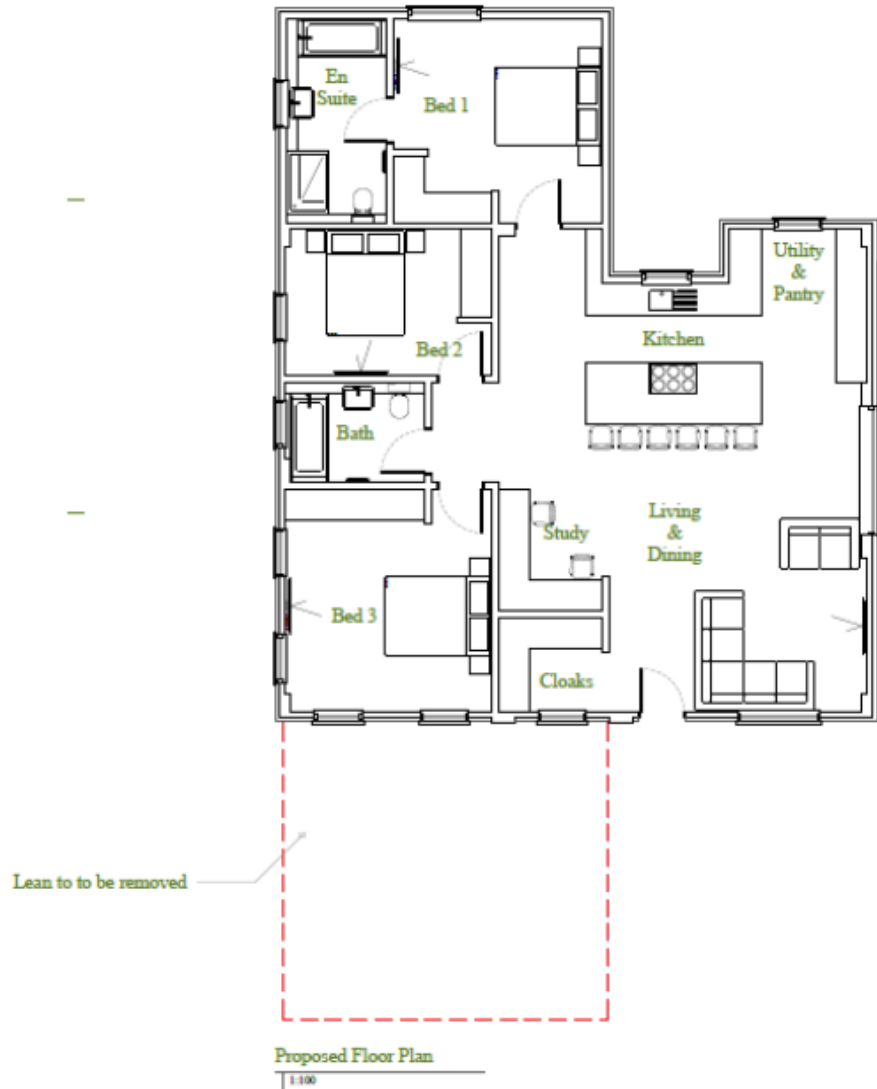
Promap  
LANDMARK INFORMATION GROUP

Promap  
LANDMARK INFORMATION GROUP

Promap  
LANDMARK INFORMATION GROUP

Promap  
LANDMARK INFORMATION GROUP

Proposed Floor plan



Viewing strictly by appointment through the Landlord's Sole Agents – Churchill Country & Equestrian Estate Agents – 01403 700222

MONEY LAUNDERING REGULATIONS 2003 intending purchasers will be asked to produce identification and proof of financial status when an offer is received. We would ask for your co-operation in order that there will be no delay in agreeing the sale. THE PROPERTY MISDESCRIPTIONS ACT 1991 The Agent has not tested any apparatus, equipment, fixtures and fittings or services and so cannot verify that they are in working order or fit for the purpose. A Buyer is advised to obtain verification from their Solicitor or Surveyor. References to the Tenure of a Property are based on information supplied by the Seller. The Agent has not had sight of the title documents. A Buyer is advised to obtain verification from their Solicitor. You are advised to check the availability of this property before travelling any distance to view. We have taken every precaution to ensure that these details are accurate and not misleading. If there is any point which is of particular importance to you, please contact us and we will provide a full and complete information you require. This is advisable, particularly if you intend to travel some distance to view the property. The mention of any appliances and services within these details does not imply that they are in full and efficient working order. These particulars are in draft form awaiting Vendors confirmation of their accuracy. These details are for information only and do not constitute an offer.